



RIIM - ARIHANT Group of Institutes

Ramachandran International
Institute Of Management
RIIM Pune

MBA + AE&LDP

AICTE Approved, U. P. Pune University Programme @
Institute Code MBK03 - AIBU
(Advanced Employability & Leadership Development Programme)

MBA + AE&LDP + MDP + DM

Advanced Employability & Leadership Development Programme,
Management Development Programme @ Digital Marketing

PGDM + 1 Month Residential Programme in Dubai

PGDM + 1 Month Residential Programme in London
(Post Graduate Diploma in Management from AIMA-CME is
Recognized by AICTE, Ministry of HRD & Government of India)

Commitment to Excellence...

- 100% Placements*
- Complimentary Laptop for MBA Students*
- 100% Scholarships for Meritorious Students*
- 500+ Hours of Personality Development & Employability Enhancement Sessions

Our Vision

Creating a world class centre of excellence in management education, training & research that empowers youth to develop their potential and transform organisations.

Our Mission

Become a leading institute of management education through its specialised areas of focused tailored programs, help develop youth in a competent and ethical professional & gentleman.

To create committed, quality conscious, culturally sensitive and socially responsible & professional workforce by developing people with right attitude and intelligence that empowers them with world class standards & values.

To help youth attain use of technologically advanced modern tools, sectors & applications with matching speed and leveraging the competitive advantage.

ABOUT RIIM - ARIHANT Group of Institutes

Arihant Education Foundation Pune & our education partner is a public charitable trust, founded in year 2005. Arihant Institute of Business Management (AIBMS) & RIIM Pune function as one entity & we have a beautiful campus in Dhadhan area of Paturdy. The campus is set in serene and verdant surroundings surrounded by lushly & ergonomically designed buildings. It provides an excellent ambience for the student community for every kind of academic activities. In addition to all academic facilities, the campus also has a modern Gym, multiple sports facilities, activity areas & hotel facilities at a store's floor. The campus is off the Pune-Mumbai highway on a beautiful virgin site road marking - RIIM Pune one of the most beautiful campuses anywhere. The Wi-Fi connectivity in the entire Campus combines seamlessly the technology with aesthetics. Life at RIIM can simply be described as totally stimulating and soothing. Both the institutions work as one entity to facilitate management education as well as to impart specialized training to maximize employability skills in order to fill the Industry Academic gap. In fact RIIM Pune has joined ARIHANT as Knowledge - Partner as a result of this need only. ARIHANT caters to MBA degree from Savitribai Phule Pune University & RIIM Pune takes care of all developmental needs of students including ABB, CP and CM to make them fully employable in every aspect. The curriculum of RIIM Pune is designed & delivered by outstanding Faculty belonging to IAS/IMA/Prarambh Government organizations / Defence forces.

“ In simple words Life at RIIM can be described as extremely stimulating and soothing experience ”

Message From The Director

I feel honored to be a part of prestigious RIIM family and my challenge is not only to ensure the academic excellence but also to upgrade, enhance and utilize the skills of our student managers aspiring to be top class leaders & managers not only at the national level but also at the international arena. I therefore do not compromise on discipline & both out of my students in any manner and I personally conduct "Personality Development & General Awareness" sessions for about 400 hours in two years.

We also ensure that each of our student goes through 15 to 20 "Industrial Visits" during his stay with us and we also conduct about 75 to 100 "Guest talks" for our student managers.

In addition we take our students for a national & an international educational tours ensure they best of overall growth & development.

We also ensure that only IT/ITM/XL30 level Faculty /Senior Government / Armed Forces officers are employed to impart academic education to our students.

We also have extensive corporate networking to make at least 100 - 250 well known companies available to our students for placements and our endeavor is always to ensure that 100% of our students get suitable jobs subject to fulfillment of our terms & conditions.

We also conduct large number of technological courses & capsules like Six Sigma, SAP & Digital Marketing in our institute to enable our student to face every kind of challenge in this regard in any level.

We also conduct foreign Language course for our students to give them an edge over any one else.

We also incorporate parents for grooming & transformation of our students & we also keep them periodically apprised of our every kind of curriculum & activities of the year.

We also encourage our students to participate in every Academic, professional, cultural & sports activity and we make sure that they only handle various committees in this regard.

We also make sure that our every our student studies in highly state-of-the-art very comfortable in our hostel & we also believe in periodic student feedback about their academic, professional & administrative activities to take all follow up actions instantaneously to maintain the best of organizational efficiency & effectiveness.

Lastly I guarantee the best of academic & professional growth of our students and I wish them "God Speed" in their lives.



Col. (Dr.) Kailash Chand

M.Sc. (Defense Studies, IIM JRM)

MOW (Public Welfare & Pers. Mgmt. - Govt. Medical)

PGDPM, Ltd (Environ. MGT (Mgmt.) & Ph.D. in Mgmt.

Director, RIIM Pune

INFRASTRUCTURE



Class Room

• Classrooms are equipped with remote controlled LCD multimedia projectors, computers with internet & Wi-Fi and public address systems with callers and cordless mobile phones.

Library

• The library is very well stocked with all kinds of course books. It subscribes more than 30 magazines and 8 newspapers to enable the students to get a much broader perspective of their areas of study. It also has number of computers with access to internet and providing our students to remain globally updated.

Computer Center

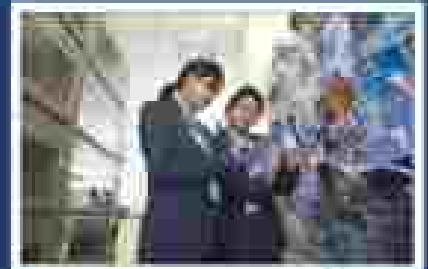
• Computer center is very well equipped with large number of computers having modern day technology with Wi-Fi environment providing accessibility across the campus. Computers are provided with UPS, Power Backup, Cable facilities include Linux OS server, Anti virus software, Firewall, Symantec and Physical protection.

Cafeteria

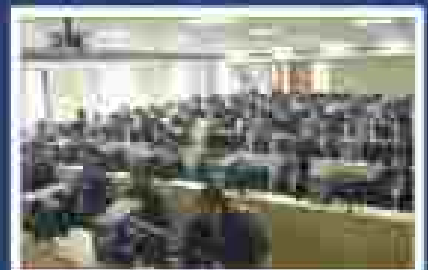
• An extensive range of dining options reflects the diversity and variety of our culture. Whether it's a quick cup of coffee or a leisurely meal, you'll find a choice that satisfies your appetite. It is well equipped with modern cafeteria.



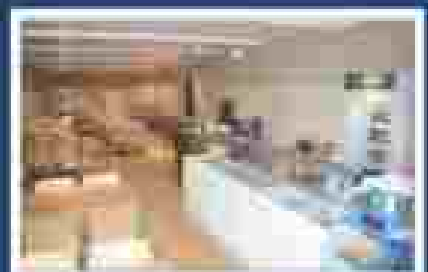
Class Room



Library



Computer Center



Cafeteria



OPERATING PHILOSOPHY

- To benchmark our standards matching with global educational partners.
- To continuously seek out & follow industry's best practices.
- To operate with a spirit of responsibility, integrity, professionalism and partnering.
- To work with speed, flexibility & an open mind.



Education Partner

PROGRAMMES OFFERED

(Approved by AICTE, Affiliated to S. P. Pune University & Recognized by Govt. of Maharashtra)
Institute Code MB6626 - AISM



MBA

(2 Years Full Time)

(Approved by AICTE, Affiliated to Savitribai Phule Pune University Programme)
Institute code - MB6626-AISM)

Course Fees : **As per notification Shilpa Sillim**

MBA + AES&LDP

₹ 3,98,000/-

(Advanced Employability & Leadership Development Programme)

- Personality Development Workshops & Guest Lectures from experts.
- Psychological Analysis and Career Counselling & Development.
- Managerial Communication including English & Technological Skills, Soft Skills Development, Business Etiquettes, Inter-cultural Seminars/Workshop
- Corporate workshops & Domain Presentations.
- 500+ Hours of Personality Development & General Awareness Sessions.
- Industry Exposure / visits & Industrial Internship for 2 months
- Job Employability Skills Development Workshops - Aptitude test, Quizzes, Management Games & Interview techniques.

Additional Capsules

- Supply Chain Management Workshop
- Foreign Language
- Management Outbound Tour - 3 Days
- Entrepreneurial Ship Workshop
- NSE Programme
- 6- Corporate Conclaves*

Note:

- 30% of the theoretical / Training program are delivered by the Academics from IITs / IITs / AIIT / Senior Government / Defense Officers. Our Pedagogy includes Case Studies, Presentations, Role Plays, Discussions, Seminars, Outbound / outdoor class & Live projects.
- Complimentary Laptop for ALL B.Tech students.
- Hostel & food compulsory for 2nd year.
- ANY NEW STUDENTS CAN OPT FOR ANY ONE OF THE THREE RESIDENTIAL INTERMEDIARY PROGRAMMES WITH THE ADDITIONAL AMOUNT OF ₹5 LACS FOR OXFORD AND ₹2 LACS FOR DELHI RESPECTIVELY.



MBA + AE&LDP + MDP + DM (Triple Certification)

₹ 5,60,000/-

(Management Development Programme + Digital Marketing)

PGDM + AE&LDP + MDP + DM (Triple Certification)

₹ 5,60,000/-

(Post Graduate Diploma in Management from AIMA-CME is recognized by AICTE, Ministry of HRD & Government of India.)

ADVANCED EMPLOYABILITY & LEADERSHIP DEVELOPMENT PROGRAMME

- Personality Development Workshops & Guest Lectures from experts.
- Psychometric Analysis and Career Counselling & Development
- Managerial Communication including English & Technical Skills, Soft Skills Development, Business Etiquette, Inter-cultural Sensitivity Workshops.
- 500+ Hours of PDCA Sessions, Corporate workshops & Earnout Presentations
- Industry Exposure / Visits & Industrial Internship for 2 months.
- Job Employability Skills Development Workshops – Aptitude Test, Outcomes, Management Games & Interview techniques.

MANAGEMENT DEVELOPMENT PROGRAM (MGT)

We have a total of 2 weekly Residential Management Development Programmes with one of the most premier management institutes of India to give international level management & managerial exposure to our students, whereas our students shall undergo academic & professional capsules to be run by the resident expert faculty and each of our students would get a certificate. In addition, the students shall also be taken for 5 to 10 industrial visits & workshops to grant them the best of corporate exposure.

DIGITAL MARKETING MODULES

- SEO (Search Engine Optimization)
- SMO (Social Media Optimization)
- Google Adwords
- Affiliate, AdSense & Email Marketing
- PPC and mobile Marketing
- Google Analytic

ADDITIONAL CAPSULES

- Six Sigma
- SAP Module - Basic Training
- Business Analytics
- IIM Case Study Case Drill Challenge
- 5+ Corporate Conferences
- Foreign Language
- Practical Corporate Exposure - 30 Days
- Entrepreneurial Cap Workshop
- TQE Program
- Management Outdoor Tour - 3 Days
- Supply Chain Management Workshop

NOTE

- 10% of the students of Training program are selected by the Authorities from IAS / IPS / IAS / IAS / IAS / Government / Defence Officers. Our Pedagogy includes Case Studies, Presentations, The Most Discussions, Seminars, Outdoor / Indoor Visits to the industry.
- Complimentary Laptop to MDP Students.
- Hostel & Mess charges for the year.
- Any MBA STUDENTS can opt for an edge of the 11 MONTH RESIDENTIAL INTERNATIONAL PROGRAMME BY PAYING THE ADDITIONAL AMOUNT OF ₹. 3 LACS FOR LONDON AND ₹. 7 LACS FOR DUBAI RESPECTIVELY.

More About Programs & Certifications



Basic Training



Digital Marketing



Six Sigma



Foreign Language



Computer Skills



Entrepreneur



Advanced Excel Training



Business Analytics





Ramachandran International
Institute Of Management
RIIM Pune



PursueAsia
International Exposure Programme

Pune's 1st College Offering

PGDM +

Month Residential Programme In DUBAI

Study, Work, Travel and Discover in one of the most cosmopolitan cities

- ✓ Dubai is the largest and most populous city in the United Arab Emirates (UAE). Dubai emerged as a global city and business hub of the Middle East.
- ✓ Exclusive one month programme developed by DEA & Pursue Asia experts and reputed companies in Dubai.
- ✓ Students learn and enhance their skills through top international industries & DEA experts.
- ✓ This International Exposure includes an Entrepreneurship Development Programme & 3 Internationally Recognized Certificates.

Course Fee : Rs. 6.25 lacs for 2 years

Fee Includes

- | | |
|---|--|
| - Tuition Fee | - All Tickets & Free Visa Applications |
| - Airport Pick & Drop in Dubai | - Accommodation |
| - Student - Related Tours and Activities | - Dubai City Tour |
| - Entrepreneurship Development through DEA Dubai | - All Meals Included |
| - 3 Certificates on completion of International Program | - SIM Cards |

- PGDM (Post Graduate Diploma in Management) from AIMA-CME is recognized by AICTE Ministry of HRD & Government of India
- Certificate of Completion International Programme by reputed firm in Dubai.
- One certificate from Pursue Asia Pvt. Ltd. and One certificate from DEA.
- Student must have a VALID PASSPORT and No criminal record or offence committed ever by the student.
- An inclusive fee for the one month programme during the second year has to be paid by mode of DD in the name of Pursue Asia
- Hostel & Mess compulsory for first year
- No Lecture in PGDM + DUBAI Programme





Ramachandran International
Institute Of Management
BIM Pune



BAC

Pune's 1st College Offering

PGDM +

1 Month Residential Programme in LONDON

Study, Get, Meet and Network in one of the world's foremost and financial capital

- ✓ London is the world's financial capital and management courses are the most popular academic choices in London. It's a great place to make new business contacts and network.
- ✓ Exclusive one month programme developed by the experts from prestigious Universities in the United Kingdom.
- ✓ Students learn and enhance their skills through top international experts.
- ✓ International Exposure, Practical Study in London, International Curriculum and two Internationally Recognized Certificates.

Course Fee : Rs. 7.25 lacs for 2 years

Fee Includes

- Tuition Fee
- Airport Pick & Drop in London
- All meals included
- Subject-related Tours and Activities
- 2 Certificates on completion of residential Program
- Return Air Ticket to London
- Accommodation at LCC Campus for entire stay
- Transport within London
- Social Events
- Visa Costs

- PGDM (Post Graduate Diploma in Management from AIMA-CME) is recognized by AICTE, Ministry of HRD & Government of India.
- Certificate of Completion by London College of Business awarded by the British Accreditation Council.
- Visa application fee of Rs. 8000 to be paid by applicant directly to Embassy.
- Student must have a valid PASSPORT and No criminal record or offences committed ever by the student.
- All expenses for the one month programme during the abroad stay has to be paid by mode of DD in the name of LCC.
- Health & Med compulsory for this year.
- No Excess in PGDM + LONDON Programme.



PGDM

₹ 4,25,000/-

(Post Graduate Diploma in Management from AIMA-CME is recognized by AICTE, Ministry of HRD & Government of India)

- ✓ Personality Development, Workplace & Soft Skills, Lectures from experts.
- ✓ Psychological Analysis and Career Counselling & Development.
- ✓ Managerial Communication including English & Non-Verbal Skills, Soft Skills Development, Business Etiquettes, Interview Skills, Seminars & Workshops.
- ✓ 100+ Hours of PGDA Sessions, Corporate workshops & Company Presentations.
- ✓ Industry Exposure / Visits & Industrial Training for 2 months.
- ✓ Job Oriented Skills Development Workshops, Corporate visit, Quality Management Course & Innovation Techniques.
- ✓ Title of the Workshops / Training programs will be awarded by Accreditation from AICTE & UGC/MAECs, British Accreditation Experts.

DIGITAL MARKETING MODULES

- ✓ SEO (Search Engine Optimization)
- ✓ SMO (Social Media Optimization)
- ✓ Affiliate Marketing
- ✓ AdSense & Email Marketing
- ✓ Google Adwords & Analytics
- ✓ PPC and mobile Marketing

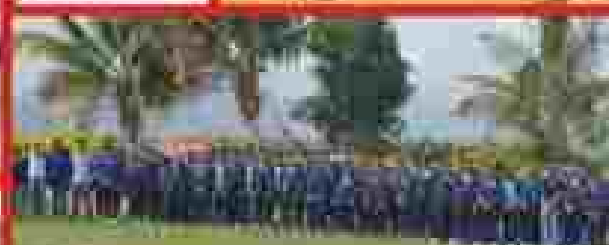
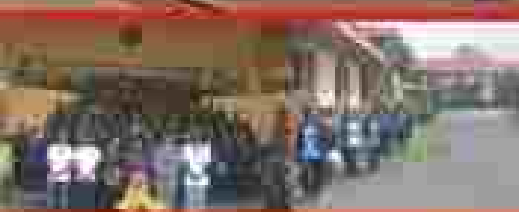
ADDITIONAL CAPSULES

- ✓ Entrepreneurial Skills Workshop
- ✓ Supply Chain Management workshop
- ✓ Practical Corporate Exposure of 30 days
- ✓ NSE Programme
- ✓ Outbound tour - 3 Days
- ✓ 4- Corporate Conferences

- ✓ Six Sigma
- ✓ SAP Module - Basic Training
- ✓ Business Analytics
- ✓ Foreign Language
- ✓ IIM-Calcutta Core Case Study Workshop-7 Days

Must have a valid passport for this year and No Excess in PGDM Programme.
London Visa Cost, Travel and Airfare Service: www.londonvisa.com - 41001

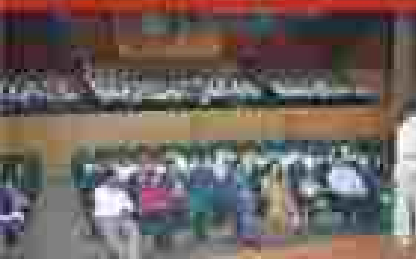
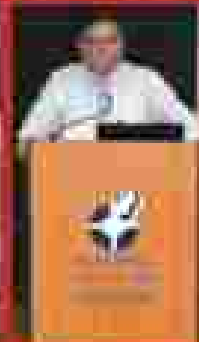
GOA TRIP



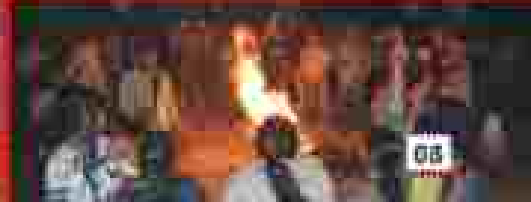
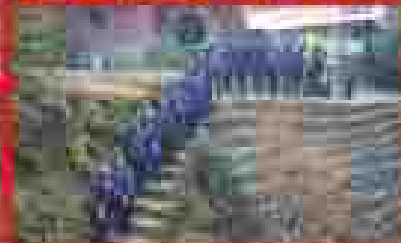
Indore TRIP



Glimpse @



Manali TRIP



MERIT SCHOLARSHIPS

We award number of merit scholarships to our outstanding students in diverse fields as given below and we also keep reviewing the same from time to time as per situation & experience.

- ✓ For claiming 100% Scholarship in Tuition Fee, the student should have $\geq 75\%$ aggregate marks (excluding Physical Education, Fine Arts & Performing Arts) in CBSE / ICSE / State Boards) in 10th, 12th & Graduation.
- ✓ For claiming 10% Scholarship in Tuition Fee, the student should have $\geq 70\%$ aggregate marks (excluding Physical Education, Fine Arts & Performing Arts) in CBSE / ICSE / State Boards) in 10th, 12th & Graduation.
- ✓ For the girl candidates we award 50% scholarship in tuition fee through RIM scholarship fund.
- ✓ For a score decided by RIM Pune, in any of the National Aptitude Tests Board / State / National level top rank holders in academics - 10% exemption in tuition fee.
- ✓ For representation at the state / national / international level sports - 10% exemption in tuition fee.
- ✓ State / National level achievers in fields other than academics in sports - 10% exemption in tuition fee.



100% Academic Scholarship, Batch 2017
10th - 91.2% | 12th - 85.42% | Graduation - 94.72%
Ms. Jaya Latwani



100% Academic Scholarship
10th - 89.2% | 12th - 82% | Graduation - 84.22%
Ms. Neha Sasi



100% Academic Scholarship
10th - 90.7% | 12th - 85.42% | Graduation - 84.22%
Mr. Abhishek Itha



100% Academic Scholarship
10th - 91.2% | 12th - 85.42% | Graduation - 94.72%
Ms. Hridha Mehra



100% Academic Scholarship
10th - 89.2% | 12th - 82% | Graduation - 84.22%
Mr. Anshuman Singh



100% Academic Scholarship
10th - 89.2% | 12th - 82% | Graduation - 84.22%
Mr. Shreyas



100% Academic Scholarship
10th - 89.2% | 12th - 82% | Graduation - 84.22%
Mr. Siddhant



100% Academic Scholarship
10th - 89.2% | 12th - 82% | Graduation - 84.22%
Ms. Anshika Singh



100% Academic Scholarship
10th - 89.2% | 12th - 82% | Graduation - 84.22%
Ms. Anshika Singh



100% Academic Scholarship
10th - 89.2% | 12th - 82% | Graduation - 84.22%
Ms. Anshika Singh



100% Academic Scholarship
10th - 89.2% | 12th - 82% | Graduation - 84.22%
Ms. Anshika Singh



100% Academic Scholarship - Batch 2017
 Roll No: 50152 | DOB: 02/02 | Graduation - EP 8052
Mr. Kartabh Surampalli



50% BHM Core Scholarship - Batch 2017
Ms. Anjali Pandey



100% Academic Scholarship - Batch 2017
 Roll No: 50152 | DOB: 02/02 | Graduation - EP 8052
Mr. Kartabh Surampalli



100% Academic Scholarship - Batch 2017
 Roll No: 50152 | DOB: 02/02 | Graduation - EP 8052
Ms. Pallabha Patra



100% Academic Scholarship - Batch 2017
 Roll No: 50152 | DOB: 02/02 | Graduation - EP 8052
Mr. Mayurish Dutta



100% Academic Scholarship - Batch 2017
 Roll No: 50152 | DOB: 02/02 | Graduation - EP 8052
Mr. Anurag Mishra



100% Academic Scholarship - Batch 2017
 Roll No: 50152 | DOB: 02/02 | Graduation - EP 8052
Ms. Pallabha Patra



100% Academic Scholarship - Batch 2017
 Roll No: 50152 | DOB: 02/02 | Graduation - EP 8052
Mr. Anurag Mishra



100% Academic Scholarship - Batch 2017
 Roll No: 50152 | DOB: 02/02 | Graduation - EP 8052
Ms. Anjali Pandey



100% Academic Scholarship - Batch 2017
 Roll No: 50152 | DOB: 02/02 | Graduation - EP 8052
Ms. Anjali Pandey

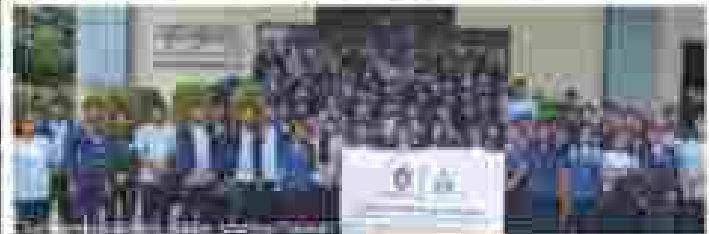


100% Academic Scholarship - Batch 2017
 Roll No: 50152 | DOB: 02/02 | Graduation - EP 8052
Mr. Anurag Mishra

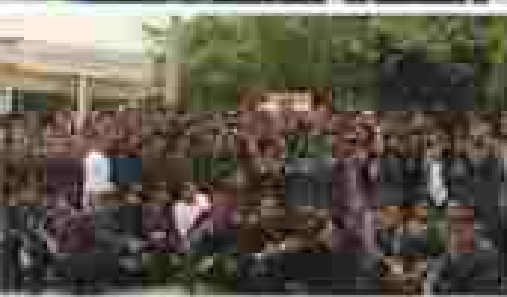


100% Academic Scholarship - Batch 2017
 Roll No: 50152 | DOB: 02/02 | Graduation - EP 8052
Mr. Anurag Mishra

INDUSTRIAL VISITS



TOP REASONS TO CHOOSE US



- ✓ 100% Placements *
- ✓ International Professional Tours / Projects & Internship in DUBAI/LONDON *
- ✓ 500+ Hours of Personality Development & General Awareness (PGCA) Seminars.
- ✓ IIM - Calcutta-Carpe Diem Workshop for 7 Days.
- ✓ Curriculum designed by leading IIMs / IITs / XLRI faculty/ Defence officers and Corporate Gurus.
- ✓ MDP from one of the most premier management institutes of India.
- ✓ Personality Assessment of every students by a qualified Senior Army officer.
- ✓ 6+ Corporate Conclaves *
- ✓ 100+ Guest talks by senior corporates from diverse fields.
- ✓ Practical National / International corporate exposure of 30 days.
- ✓ Personality Development, Soft Skills and Confidence Building of students - very vital aspect of development for success.
- ✓ 100% Scholarship* offered for the meritorious students as well as special fee waiver for girls to promote girls education in management.
- ✓ Corporate Infrastructure where corporate culture is followed from the day one.
- ✓ Regular interaction with corporate Gurus & extensive corporate networking.
- ✓ Technological skills - Six Sigma, SAP, Business Analytics & Digital Marketing.
- ✓ Pedagogy: Case Studies, Domain Presentations, Group Discussions, Management Games, National & International Visits, Debates, Quizzes, Outbound/Experiential Seminars, Interview techniques, Role Plays, Live Mim Projects, Aptitude test & Corporate Workshops etc.



Learning



100% Placement



Education Power Trip
Dubai / London



Soft Skills



Scholarship



Uniform

ADMISSION PROCEDURE

Eligibility Criteria: 50% in bachelor degree in any discipline from recognized university
Candidates appearing for final year bachelors degree examination can also apply.

Visit website for more details: www.rimpune.com

Selection Procedure

Candidates are required to take one of the following entrance tests:

- Common Admission Test (CAT 2017)
- XLRI Admissions Test (XAT 2017)
- CMAT / MAT / MH CET / ATMA & AMBA Test 2017 - 18

Procedure for applying to RIIM

Candidates who wish to obtain the RIIM Prospectus and Application form by courier/speed post should send a Demand Draft of Rs. 1000/- in favour of "RAMACHANDRAN INTERNATIONAL INSTITUTE OF MANAGEMENT" / "AIRMAINT INSTITUTE OF BUSINESS MANAGEMENT" payable at Pune at the institute address mentioned on the back cover page or log on to www.rimpune.com or raj@rime.com

Incomplete forms will not be accepted. The forms can also be obtained from selected coaching institutes. Candidates can also apply online by visiting our Institute website: www.rimpune.com

The Prospectus and Application form will be issued only in the name of the applicant wishing to apply for admission. The form is non-transferable.

The list of short-listed candidates for Group Discussion and Personal interviews (GD+PI) will be posted on the website and also the candidates will be contacted by SMS, email, courier/speed post.



MESSAGE FROM PLACEMENTS CELL

India is at inflex point. Growing consumerism, government's initiatives for infrastructure improvement and equally robust performance of rural and urban economy has made India the most sought after consumer market globally.

Naturally, the long term employment scenario for budding managers appears to be bright. However, the recent market reports about lower employability of MBA graduates underline the need of bridging the gap between industry and academia.

Guest talks, workshops, mentoring and assistance in student development activities by senior corporate executives coupled with strong academic inputs complements a student's learning process at RIM. We inculcate sense of responsibility, team membership and performance driven culture amongst the students, which makes them ready to face VUCA challenges of the corporate world.

If you have passion for excellence, RIM is the ideal place for you!

Prof. Sachin Lohia

Head- Corporate Relations and Faculty in Marketing
RIM Pune

He has a decade of corporate & academic experience. His last assignment was- Head Placement at IISBM Pune.

GLIMPSE OF RIIM PLACEMENTS / SIP - Batch 2016-18

<p>Prachi Bhatnagar BBA (Hons.) The Indian Institute of Banking & Finance</p>	<p>Prachi Bhatnagar BBA (Hons.) IIT Bombay</p>	<p>Manish Prasad Singh BBA (Hons.) IIT Bombay</p>	<p>Anshika Chatterjee BBA (Hons.) IIT Bombay</p>	<p>Anshika Chatterjee BBA (Hons.) IIT Bombay</p>	<p>Anshika Chatterjee BBA (Hons.) IIT Bombay</p>
<p>Anshika Chatterjee BBA (Hons.) IIT Bombay</p>	<p>Anshika Chatterjee BBA (Hons.) IIT Bombay</p>	<p>Anshika Chatterjee BBA (Hons.) IIT Bombay</p>	<p>Anshika Chatterjee BBA (Hons.) IIT Bombay</p>	<p>Anshika Chatterjee BBA (Hons.) IIT Bombay</p>	<p>Anshika Chatterjee BBA (Hons.) IIT Bombay</p>
<p>Anshika Chatterjee BBA (Hons.) IIT Bombay</p>	<p>Anshika Chatterjee BBA (Hons.) IIT Bombay</p>	<p>Anshika Chatterjee BBA (Hons.) IIT Bombay</p>	<p>Anshika Chatterjee BBA (Hons.) IIT Bombay</p>	<p>Anshika Chatterjee BBA (Hons.) IIT Bombay</p>	<p>Anshika Chatterjee BBA (Hons.) IIT Bombay</p>
<p>Anshika Chatterjee BBA (Hons.) IIT Bombay</p>	<p>Anshika Chatterjee BBA (Hons.) IIT Bombay</p>	<p>Anshika Chatterjee BBA (Hons.) IIT Bombay</p>	<p>Anshika Chatterjee BBA (Hons.) IIT Bombay</p>	<p>Anshika Chatterjee BBA (Hons.) IIT Bombay</p>	<p>Anshika Chatterjee BBA (Hons.) IIT Bombay</p>

GLIMPSE OF RIM PLACEMENTS / SIP - Batch 2016-18

 Tejaswini Sharma B.Tech. (IT) www.rajshreegroupofinstitutes.com	 Adithyan Chandrasekhar B.Tech. (IT) www.rajshreegroupofinstitutes.com	 Harshit Sharma B.Tech. (IT) www.rajshreegroupofinstitutes.com	 Chandrasekar Reddy B.Tech. (IT) www.rajshreegroupofinstitutes.com	 Chaitanya Sharma B.Tech. (IT) www.rajshreegroupofinstitutes.com	 Arjun Kumar B.Tech. (IT) www.rajshreegroupofinstitutes.com
 Swathi Chinnappa B.Tech. (IT) www.rajshreegroupofinstitutes.com	 Arjun Singh B.Tech. (IT) www.rajshreegroupofinstitutes.com	 Arjun Chinnappa B.Tech. (IT) www.rajshreegroupofinstitutes.com	 Shruti Kulkarni B.Tech. (IT) www.rajshreegroupofinstitutes.com	 Shravan Kumar B.Tech. (IT) www.rajshreegroupofinstitutes.com	 Alina Jiji B.Tech. (IT) www.rajshreegroupofinstitutes.com
 Arjun Kumar B.Tech. (IT) www.rajshreegroupofinstitutes.com	 Arjun Kumar B.Tech. (IT) www.rajshreegroupofinstitutes.com	 Wahidul Karim B.Tech. (IT) www.rajshreegroupofinstitutes.com	 Arjun Kumar B.Tech. (IT) www.rajshreegroupofinstitutes.com	 Chaitanya Kumar B.Tech. (IT) www.rajshreegroupofinstitutes.com	 Arjun Kumar B.Tech. (IT) www.rajshreegroupofinstitutes.com
 Chaitanya Kumar B.Tech. (IT) www.rajshreegroupofinstitutes.com	 Arjun Kumar B.Tech. (IT) www.rajshreegroupofinstitutes.com	 Arjun Kumar B.Tech. (IT) www.rajshreegroupofinstitutes.com	 Arjun Kumar B.Tech. (IT) www.rajshreegroupofinstitutes.com	 Arjun Kumar B.Tech. (IT) www.rajshreegroupofinstitutes.com	 Arjun Kumar B.Tech. (IT) www.rajshreegroupofinstitutes.com
 Arjun Kumar B.Tech. (IT) www.rajshreegroupofinstitutes.com	 Arjun Kumar B.Tech. (IT) www.rajshreegroupofinstitutes.com	 Arjun Kumar B.Tech. (IT) www.rajshreegroupofinstitutes.com	 Arjun Kumar B.Tech. (IT) www.rajshreegroupofinstitutes.com	 Arjun Kumar B.Tech. (IT) www.rajshreegroupofinstitutes.com	 Arjun Kumar B.Tech. (IT) www.rajshreegroupofinstitutes.com
 Arjun Kumar B.Tech. (IT) www.rajshreegroupofinstitutes.com	 Arjun Kumar B.Tech. (IT) www.rajshreegroupofinstitutes.com	 Arjun Kumar B.Tech. (IT) www.rajshreegroupofinstitutes.com	 Arjun Kumar B.Tech. (IT) www.rajshreegroupofinstitutes.com	 Arjun Kumar B.Tech. (IT) www.rajshreegroupofinstitutes.com	 Arjun Kumar B.Tech. (IT) www.rajshreegroupofinstitutes.com
 Arjun Kumar B.Tech. (IT) www.rajshreegroupofinstitutes.com	 Arjun Kumar B.Tech. (IT) www.rajshreegroupofinstitutes.com	 Arjun Kumar B.Tech. (IT) www.rajshreegroupofinstitutes.com	 Arjun Kumar B.Tech. (IT) www.rajshreegroupofinstitutes.com	 Arjun Kumar B.Tech. (IT) www.rajshreegroupofinstitutes.com	 Arjun Kumar B.Tech. (IT) www.rajshreegroupofinstitutes.com

GLIMPSE OF RIM PLACEMENTS / SIP - Batch 2016-18

  Prachi Sharma E.ON Energy Senior Analyst New Delhi, India	  Anshu Sharma FOSS Senior Analyst New Delhi, India	  Anshu Sharma E.ON Energy Senior Analyst New Delhi, India	  Anshu Sharma E.ON Energy Senior Analyst New Delhi, India	  Anshu Sharma E.ON Energy Senior Analyst New Delhi, India	  Anshu Sharma Amul Senior Analyst New Delhi, India
  Anshu Sharma E.ON Energy Senior Analyst New Delhi, India	  Anshu Sharma Amul Senior Analyst New Delhi, India	  Anshu Sharma Amul Senior Analyst New Delhi, India	  Anshu Sharma Amul Senior Analyst New Delhi, India	  Anshu Sharma Amul Senior Analyst New Delhi, India	  Anshu Sharma Amul Senior Analyst New Delhi, India
  Anshu Sharma Amul Senior Analyst New Delhi, India	  Anshu Sharma Amul Senior Analyst New Delhi, India	  Anshu Sharma Amul Senior Analyst New Delhi, India	  Anshu Sharma Amul Senior Analyst New Delhi, India	  Anshu Sharma Amul Senior Analyst New Delhi, India	  Anshu Sharma Amul Senior Analyst New Delhi, India
  Anshu Sharma Amul Senior Analyst New Delhi, India	  Anshu Sharma Amul Senior Analyst New Delhi, India	  Anshu Sharma Amul Senior Analyst New Delhi, India	  Anshu Sharma Amul Senior Analyst New Delhi, India	  Anshu Sharma Amul Senior Analyst New Delhi, India	  Anshu Sharma Amul Senior Analyst New Delhi, India
  Anshu Sharma Amul Senior Analyst New Delhi, India	  Anshu Sharma Amul Senior Analyst New Delhi, India	  Anshu Sharma Amul Senior Analyst New Delhi, India	  Anshu Sharma Amul Senior Analyst New Delhi, India	  Anshu Sharma Amul Senior Analyst New Delhi, India	  Anshu Sharma Amul Senior Analyst New Delhi, India
  Anshu Sharma Amul Senior Analyst New Delhi, India	  Anshu Sharma Amul Senior Analyst New Delhi, India	  Anshu Sharma Amul Senior Analyst New Delhi, India	  Anshu Sharma Amul Senior Analyst New Delhi, India	  Anshu Sharma Amul Senior Analyst New Delhi, India	  Anshu Sharma Amul Senior Analyst New Delhi, India
  Anshu Sharma Amul Senior Analyst New Delhi, India	  Anshu Sharma Amul Senior Analyst New Delhi, India	  Anshu Sharma Amul Senior Analyst New Delhi, India	  Anshu Sharma Amul Senior Analyst New Delhi, India	  Anshu Sharma Amul Senior Analyst New Delhi, India	  Anshu Sharma Amul Senior Analyst New Delhi, India



OUR RECRUITERS



100% Independent Group of Institutions



Ramachandran International
Institute Of Management
RIIM Pune

☎ 020 65700900

✉ admission@riimpune.com

🌐 www.riimpune.com

📍 Bavdhan (Bk), Behind Crystal Honda Showroom, Pune - 411021

Admission Help Desk 📞 | 📱: 97720060704

Follow us on   